



# Rethinking Demographic Change The Professional Learning Series

Demography is the study of life and death and everything we do in between. The fabric of a place – social, political and economic – is fundamentally determined by its socio-economic demographics.

Public policy both shapes and responds to socio-demographic trends (or it should) and directly, and indirectly, influences population change, liveability and economic and social prosperity. Socio-demography plays a key role in our political systems, economies and societies at the local, regional, state, national, and global level.

For over three decades, demographers have been alerting policy-makers around the world to the impending end of what is known as the demographic transition, the onset of population ageing and the need to plan effectively for this social and economic transformation.

While the demographic transition has been playing out in the developed world for 50 to 60 years, the 2020s has hastened the process and the impacts of not effectively planning for this time to come are now acutely visible across many domains.

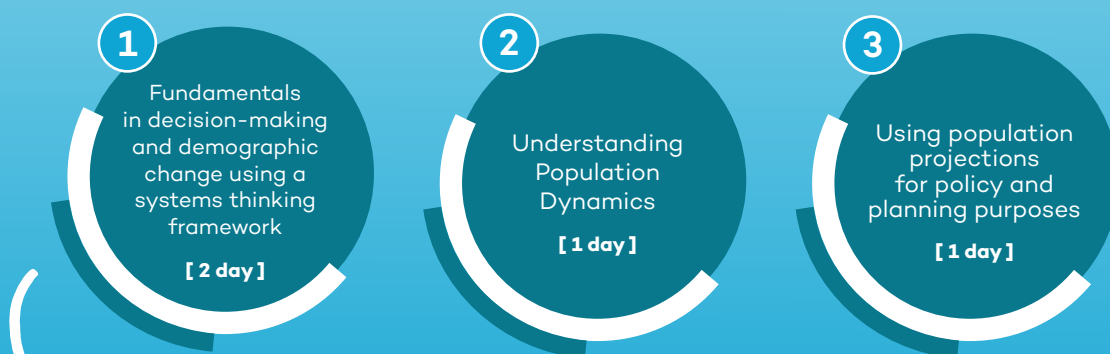
Motivated by equipping more people with the knowledge and understanding of the theoretical foundations of socio-demographic change and the tools of systems thinking, Dr Lisa Denny has designed this **Rethinking Demographic Change** professional learning series to both support and enable deeply informed decision-making with a view for achieving both short term and longer term economic and social prosperity and greater equity.

The **Rethinking Demographic Change** professional learning series is grounded in a deep evidence base and supported by curated resources including reading materials, videos, podcasts and case studies.

The professional learning series is designed through a Science of Learning lens to be intensive and intentional. Your thinking will be challenged as you delve into a new way of observing the world and the events within it. To support you in this process, applied learning activities will be incorporated to check your understanding and progress, while time and space will be provided for reflection and deeper thought.

**Following the courses, you will be supported with continuous learning opportunities, collaboration and thought-sharing with like-minded practitioners through a private, online Community of Practice.**

The series consists of three intensive, intentional, professional learning experiences:



For future course dates and locations as well as further information and resources visit [www.lisadenny.com.au](http://www.lisadenny.com.au)

**Dr Lisa Denny**  
Adjunct Associate Professor, University of Tasmania | PhD, BCom, BA(Hons), GradDipEd, GradCertEdStudies

Lisa is a systems thinker, demographer, researcher and educator. She will work with you to better understand the inter-related nature of socio-demographic change, the economy, education, training and the workforce, regions and the broader community through research, data analysis and interpretation of complex economic and social issues using a systems thinking lens, in your context, so that you can make informed decisions.

